

PRIMARY RESEARCH

Open Access

Effect of DNA methylation inhibitor on RASSF1A genes expression in non-small cell lung cancer cell line A549 and A549DDP

Duan Mengxi, Wang Qian, Wang Nan, Xiao Xiaoguang and Li Shijun *

Abstract

Background: Ras association domain family 1A gene (RASSF1A) is a candidate suppressor gene, Lack of RASSF1A expression was found in lung cancer. High DNA methylation at the promoter region is the main reason for inactivating RASSF1A transcription.

Methods: In this study, we examined RASSF1A's methylation status and its mRNA expression level between non-small cell lung cancer cell line A549 and anti-Cisplatin cell strain A549DDP, Furthermore, methylation of A549DDP was reversed by treatment of 5-Aza-2'-deoxycytidine (5-Aza-cdR), a DNA methyltransferase inhibitor.

Results: We found that RASSF1A's methylation status and its mRNA expression were obvious differences between A549 and A549DDP. 5-Aza-CdR treatment remarkably reduced cell viability of A549DDP. Moreover, 5-Aza-CdR treatment induced A549DDP cell apoptosis in a dose dependent manner with declining cell percentage in S and G2/M stage, and increasing proportion in G0/G1 stage. Cell motility was blocked in G0/G1 stage. All of A549DDP cells showed unmethylated expression, its high methylation status was reversed in a dose-dependent manner within a certain range.

Conclusions: The abnormal gene methylation status of RASSF1A is a molecular biomarker in lung cancer diagnosis, treatment and prognosis.

Keywords: RASSF1A, DNA methylation, 5-Aza-2'-deoxycytidine, Non-small cell lung cancer, Resistance

Introduction

Lung cancer is one of the most common malignant tumors with highest incidence and morbidity [1,2]. Late detection is a major contributor to these high mortality rates [3]. Most patients are already at the late stage of lung cancer when they are diagnosed. Cisplatin [4] is the first-line chemotherapy drug, used in the late stage of lung cancer. However, cisplatin and other drugs are not efficient chemotherapy in non-small cell lung cancer (NSCLC). It is the most urgent to conquer the drug-resistance of NSCLC in cancer therapy.

Recent studies have shown that the inactivation of tumor-suppressor genes plays an important role in the pathogenesis and chemotherapy sensitiveness of lung cancer [5]. Ras association domain family 1A gene (RASSF1A)

is a candidate suppressor gene [6], which is localized at 3p21.3, coding a group of RAS protein. Homozygote and heterozygote loss of RASSF1A was found in more than 90% of small cell lung cancer and in 50-80% of non-small cell lung cancer [7,8]. High DNA methylation at the promoter region is the main reason [9], especially in CpG islands. Low methylation of DNA can make chromosome instability [10], such as chromosome breakage, translocation and lost, and proto-oncogene activation; High methylation of DNA promoter region CpG islands can make the tumor suppressor gene inactivation [11,12]. Methylation status is a biomarker, but it can be reversed by methyltransferase inhibitor, such as 5 - Aza - CdR [13]. In this study, we studied the abnormal gene methylation status of RASSF1A in NSCLC cell line A549 and anti-Cisplatin cell strain A549DDP and suggested that methylation of RASSF1A is a molecular biomarker in cancer diagnosis, treatment and prognosis.

* Correspondence: lishijun@dl.cn

Department of Clinical Laboratory, The First Affiliated Hospital of Dalian Medical University, Dalian 116011, China

Results

RASSF1A methylation in lung cancer cells

To investigate the different status of RASSF1A DNA methylation in lung cancer cells, we examined DNA methylation of RASSF1A in the Cisplatin-resistant cell strain A549DDP and A549 lung cancer cells by MSP. We found that RASSF1A gene was mostly methylated in Cisplatin-resistant cell strain A549DDP; but, mostly unmethylated in A549 cell line (Figure 1).

RASSF1A mRNA expression in lung cancer cells

To investigate the different of RASSF1A gene's expression between A549DDP and A549 lung cancer cells, we used RT-PCR to detect it. We found that RASSF1A gene's expression in A549 cell line was clearly higher than A549DDP. In these two kinds of cells, the RASSF1A methylation status was tended to vary inversely with its mRNA's transcriptional level (Figure 2). We hypothesized that DNA methylation can cause gene expression to cut down.

5-Aza-CdR can effect RASSF1A gene methylation status and gene expression

We found that RASSF1A's methylation status and its mRNA's expression were obvious differences between A549 and A549DDP. In A549DDP group, RASSF1A gene was highly methylation expression and little mRNA expression. Whether such status can be reversed by methyltransferase inhibitor, we added different concentration of 5-Aza-CdR to A549DDP cells. After training 48 hrs, we found that RASSF1A genes showed unmethylated states and the mRNA expression increased in all experimental groups. Used optical density ratio of β -actin gene, when the 5-Aza-CdR concentration was 0 $\mu\text{mol/L}$, 5 $\mu\text{mol/L}$, 10 $\mu\text{mol/L}$, 20 $\mu\text{mol/L}$, the relative expression level were 0.06 ± 0.02 , 0.22 ± 0.11 , 0.36 ± 0.16 , 0.54 ± 0.15 . The RASSF1A mRNA expression was raised in each

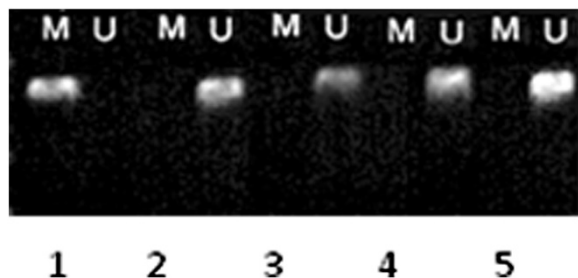


Figure 1 MSP detected RASSF1A's methylation status before and after adding to 5-Aza-CdR in different concentration.

Lane M: methylated stripe (119 bp); Lane U: unmethylated stripe (125 bp); Lane 1: A549DDP cell; Lane 2: A549 cell; Lane 3: A549DDP 5 $\mu\text{mol/L}$ group; Lane 4: A549DDP 10 $\mu\text{mol/L}$ group; Lane 5: A549DDP 20 $\mu\text{mol/L}$ group.

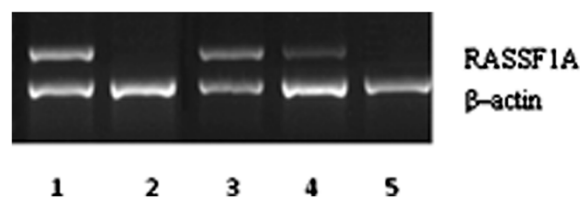


Figure 2 RASSF1A gene's expression detected by RT-PCR. Up Lane: RASSF1A (331 bp); Down Lane: β -actin (271 bp), Lane 1: A549 cell; Lane 2: A549DDP cell; Lane 3: A549DDP 5 $\mu\text{mol/L}$ group; Lane 4: A549DDP 10 $\mu\text{mol/L}$ group; Lane 5: A549DDP 20 $\mu\text{mol/L}$ group.

group, the difference had statistics significance ($P < 0.05$) (Figures 1 and 2).

Detecting A549DDP cell inhibitory situation by MTT assay

To investigate the different cell inhibitory status between lung cancer cells, we examined them by MTT assay. We found that A549DDP cells showed a remarkable inhibition action after 48 hrs treatment of 5-Aza-CdR. The inhibition rate increased with the increase of drug dosage in a dose dependent manner. The inhibition rates were 8.4%, 18.9%, 27.8%, when drug dosage were 5 $\mu\text{mol/L}$, 10 $\mu\text{mol/L}$, 20 $\mu\text{mol/L}$, which was statistically significant by comparison with control group ($P < 0.05$) (Figure 3). We hypothesized that 5-Aza-CdR treatment remarkably reduced cell viability of A549DDP.

Cell apoptosis and cell cycle detected by flow cytometry

To investigate the different cell apoptosis and cell cycle between lung cancer cells, we examined them by flow cytometry. We found that after 48 hrs intervention of 5-Aza-CdR, A549DDP cells apoptosis increasing, and go with the increase of drug dosage in a dose dependent manner. When concentration were 0 $\mu\text{mol/L}$, 5 $\mu\text{mol/L}$, 10 $\mu\text{mol/L}$, 20 $\mu\text{mol/L}$, the apoptosis rate were 6.70%, 8.56%, 17.84%, 38.91%. The results of 10 $\mu\text{mol/L}$ and

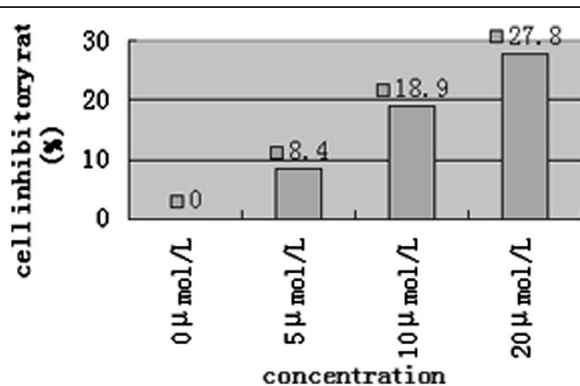


Figure 3 MTT assay detected A549DDP cell inhibitory situation after 48 hrs intervention of 5-Aza-CdR in different concentrations.

20 μmol/L goupe were statistically significant by comparison with control group ($P < 0.05$), but 5 μmol/L group had no statistically signification ($P > 0.05$). (Figure 4). At the same time, cell percentage in S and G2/M declined, and proportion in G0/G1 stage increased. Cell motility was blocked in G0/G1 stage (Table 1).

Discussion

RASSF1A is a tumor suppressor gene in widely research, that participation in a variety of biological events, such as cell growth, differentiation and apoptosis, plays an important inibitional effect in tumor growth process, RASSF1A has also been associated with stabilization of microtubules and has been shown to influence cell motility and genomic stability [14-16]. RASSF1A promoter methylation states in small cell lung cancer, non small cell lung cancer and breast cancer cell lines were 100%, 63% and 64% respectively,while the nomal lung tissue is none, and higher degree in poorly differentiated tumors, but lower in well differentiated tumors [17]. Dammann [18] studied eight pancreatic cancer cell lines found that RASSF1A gene promoter regions methylated in almost seven lines, five lines were completely methylated, two were partly methylated. So DNA methylation can result in tumor occurrence, development and drug-resistant, it has become a new research direction.

In the study, RASSF1A mainly unmethylation status in A549 cells, but high methylation status in A549DDP; And its mRNA expression of A549 was obviously higher than that of A549DDP. The relationships between them had inversely proportional. It was showed that high promoter methylation status of RASSF1A might be an important foundation to reduce gene transcription activity, moreover involved in drug resistance in non-small cell lung cancer. 5 - Aza - CdR can make RASSF1A gene to demethylate and gene expression again or enhance. Further showed that it also significantly inhibited A549DDP cell proliferation

Table 1 Cell cycle detected by flow cytometry

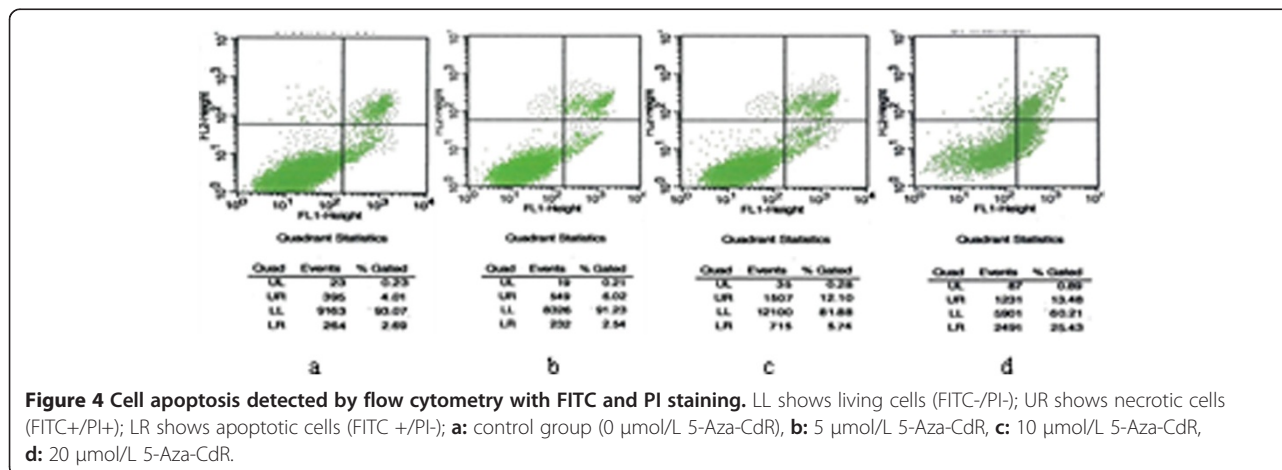
Group	G0/G1	S	G2/M
Control	60.94 ± 1.73	34.12 ± 1.52	4.94 ± 0.27
5 μmol/L	62.79 ± 2.21	31.82 ± 1.77	5.39 ± 0.36
10 μmol/L	69.35 ± 1.46	26.41 ± 1.67	4.24 ± 0.83
20 μmol/L	79.98 ± 2.08	18.07 ± 1.03	1.95 ± 0.53

and increased cell apoptosis rate, cell cycle arrest in G0/G1 phase.

As DNA methyltransferase inhibitor, 5 - Aza - CdR [19] mainly by phosphorylated action, and do not affect DNA synthesis, restore normal function, which is very important to cell differentiation and proliferation. Mostly important, 5 - Aza - CdR is insensitive to non-proliferative cells. The Federal Drug Administration has approved DNA methyltransferase inhibitors for the treatment of myelodysplastic syndrome [20]. Drugs of this class have also been used successfully in other hematological malignancies [21]. More recently, pre-clinical and clinical data have demonstrated that these inhibitors can be used to reduce the malignant potential of solid tumors as well [22]. But 5 - Aza - CdR is not stable and has toxicity in aqueous solution. The demethylation is lack of specific target. It is worth to further discussing that its clinical efficacy, tolerability in vivo and the best compatibility dose, if it can be used in lung cancer treatment.

Conclusions

Taken together, we demonstrate that RASSF1A's methylation status was reversed by treatment of 5-Aza-2'-deoxycytidine. Moreover, cell apoptosis and growth were changed. Cell motility was blocked in G0/G1 stage. RASSF1A's methylation status may be a new biology marker and gene therapy target in lung cancer.



Materials and methods

Cell culture

Human non-small lung cancer cell line A549 obtained from the First Affiliated Hospital of Dalian Medical University (Liaoning, China). Human anti-Cisplatin non-small lung cancer cell strain A549DDP Purchased in Runcheng biotechnology company (Nanjing, China). A549 and A549DDP cells were cultured in RPMI-1640 medium (Invitrogen, USA) containing 10% fetal bovine serum (Gibco, USA), at 37°C in a humidified incubator containing 5% CO₂. Added cisplatin (Jiangsu Haosen, China) to A549DDP medium and the final concentration was 2 µg/ml; The cells were passaged once or twice every week. Cells at logarithmic growth phase were used in following experiments.

Methylation-specific PCR(MSP)

Both cells were collected and washed with phosphate buffered saline (PBS). Adjusted cell number to 2×10^3 . DNA was extracted from the cells using EZ DNA Methylation-Direct Kit™ (ZYMO, USA) according to the manufacturer's protocol. Reaction system content 10 µl Tag PCR Master Mix, 1 µl Primer1, 1 µl Primer2, add ddH₂O to 20 µl. Upstream and downstream primers for RASSF1A-M (methylated stripe, 119 bp) were 5'-GTGTTAACGCGTTGCGTATC-3' and 5'-AACCCCGCGAACTAAAAACGA-3', respectively. Upstream and downstream primers for RASSF1A-U (unmethylated stripe, 125 bp) were 5'-TTTGGTTGGAGTGTGTTAATGTG-3' and 5'-CAAA CCCCACAACTAAAAACAA-3'. The conditions were 94°C for 5 min, followed by 35 cycles of 94°C for 30s, 55°C (RASSF1A-M) or 60°C (RASSF1A-U) for 30 s, and 72°C for 30s and a final extension at 72°C for 10 min. 10 µl PCR products were separated on the 2% agarose gel and viewed by ethidium bromide (EB) staining. By using tanon image analysis software, scanned optical density of RASSF1A and β-actin gene in electrophoresis image, indicating with both absorbance ratios.

RT-PCR

Both cells were collected and washed by phosphate buffered saline (PBS). Total RNA was extracted from the cells using RNAiso reagent (Takara, Dalian, China) 1 µl total RNA were amplified by using PrimeScript™ One Step RT-PCR Kit Ver.2 (Takara, Dalian, China), reaction system was 50 µl, according to the manufacturer's protocol. Upstream and downstream primers for RASSF1A (331 bp) were 5'-ACTTGC GGAAGCTGTTGGA-3' and 5'-CG CTGCAGGATACG TAGGAA-3', respectively. Upstream and downstream primers for β-actin (271 bp) were 5'-CTACAATGAGCTGCGTGTGGC-3' and 5'-CAGGTCC AGACGCAGGATGGC-3', respectively. The conditions were 50°C for 30 min, 94°C for 2 min, followed by 30 cycles of 94°C for 30 s, 60°C for 30 s, and 72°C for 1 min. 10 µl

PCR products were separated on the 2% agarose gel and viewed by ethidium bromide (EB) staining. These data were acquired with Tianneng software too.

A549DDP cells treatment by 5 - Aza - cdR in different concentration

A549DDP cells in logarithmic phase with cell number was $(1.5-2) \times 10^4$ /ml were incubated in a 96-well plate, each hole for 200 µl, at 37°C in a humidified incubator containing 5% CO₂ to continue training. Removed the nutrient solution after 24 hrs, and then, added to different concentration of 5 - Aza - cdR (5 µ mol/l, 10 µ mol/l, and 20 µ mol/l) respectively, final volume was 200 µl/well each hole. The control group was the holes that without adding drug. Each group had four Repeat holes, further training at 37°C for 48 hrs.

5-Aza-CdR treatment effecting RASSF1A's methylation status and its mRNA's expression

Extracting DNA of above drug treated cells for MSP, total RNA for RT-PCR, to detect the change of RASSF1A's methylation status and mRNA's expression level after adding 5 - Aza - CdR. The conditions and methods follow the former.

MTT assay

The above A549DDP cells in each group were added to 5 mg/ml MTT (20 µl/well) and further incubated at 37°C for 4 hrs, then added with DMSO (150 µl/well) and incubated for 10 min. A592 was determined by a 96-well microtitre plate reader. According to the following formula, all experiments were performed in triplicate.

$$\begin{aligned} \text{Cell inhibitory rate (\%)} \\ &= (1 - \text{OD of test group} / \text{OD of control group}) \\ &\quad \times 100\%. \end{aligned}$$

Flow cytometry

A549DDP cells above were collected, washed three times with PBS and added to 1 ml ethanol (70%), fixed 2 hrs at 4°C. Washed with PBS, and then, removed supernatant after centrifugating. For detecting cell cycle, added with 0.5 ml propidium iodide (PI), then incubated at 37°C in dark for 30 min; For detecting cell apoptosis rate, added with 500 µl Annexin binding buffer, 5 µl Annexin V-FITC, and 5 µl propidium iodide (PI), then incubated at room temperature in dark for 15 min. The cell apoptosis and cell cycle were determined by flow cytometry (BD, USA) and analyzed with Cell Quest software.

Statistical analysis

Statistical analysis was performed using SPSS 13.0 software (SPSS Incorporation, Chicago, USA). Data are expressed

as mean \pm standard deviation (SD) and analyzed by ANOVA. $P < 0.05$ was considered statistically significant.

Abbreviations

RASSF1A: Ras association domain family 1A gene; RT-PCR: Reverse transcription-polymerase chain reaction; 5-Aza-cdR: 5-Aza-2'-deoxycytidine; NSCLC: Non-small cell lung cancer; PBS: Phosphate buffered saline; MSP: Methylation-specific PCR; EB: Ethidium bromide.

Competing interests

The authors declare no conflict of interests.

Authors' contributions

LS is corresponding author and organized the study, DM and WQ analyzed data, performed experiments and drafted the manuscript. WN and XX coordinated the study, participated in its design. All authors read and approved the final manuscript.

Acknowledgments

The study was funded by Liaoning province natural science foundation of China (No. 20092167).

Received: 25 April 2013 Accepted: 3 September 2013

Published: 8 September 2013

References

1. Jemal A, Siegel R, Xu J, Ward E: **Cancer statistics, 2010.** *CA Cancer J Clin* 2010, **60**(5):277–300.
2. Jack RH, Davies EA, Møller H: **Lung cancer incidence and survival in different ethnic groups in South East England.** *Br J Cancer* 2011, **105**(7):1049–1053.
3. Van't Westeinde SC, van Klaveren RJ: **Review screening and early detection of lung cancer.** *Cancer J* 2011, **17**(1):3–10.
4. Belani CP, Langer C: **Review first-line chemotherapy for NSCLC: an overview of relevant trials.** *Lung Cancer* 2002, **38**(Suppl 4):13–19.
5. Jones PA, Baylin SB: **Review The fundamental role of epigenetic events in cancer.** *Nat Rev Genet* 2002, **3**(6):415–428.
6. Dammann R, Li C, Yoon JH, Chin PL, Bates S, Pfeifer GP: **Epigenetic inactivation of a RAS association domain family protein from the lung tumour suppressor locus 3p21.3.** *Nat Genet* 2000, **25**(3):315–319.
7. Amaal YG, Minera MG, et al: **Ras association domain family 1C protein stimulates human lung cancer cell proliferation.** *Am J Physiol Lung Cell Mol Physiol* 2006, **291**(6):1185–1190.
8. Kim DH, Kim JS, Ji YI, Shim YM, Kim H, Han J, Park J: **Hypermethylation of RASSF1A promoter is associated with the age at starting smoking and a poor prognosis in primary non-small cell lung cancer.** *Cancer Res* 2003, **63**(13):3743–3746.
9. Grote HJ: **Aberrant promoter methylation as biomarker for molecular cytological diagnosis of lung cancer.** *Verh Dtsch Ges Pathol* 2006, **90**:216–226.
10. Liloglou T, Maloney P, Xinarianos G, Hulbert M, Walshaw MJ, Gosney JR, Turnbull L, Field JK: **Cancer-specific genomic instability in bronchial lavage: a molecular tool for lung cancer detection.** *Cancer Res* 2001, **61**(4):1624–1628.
11. de Fraipont F, Moro-Sibilot D, Michelland S, Brambilla E, Brambilla C, Favrot MC: **Promoter methylation of genes in bronchial lavages: a marker for early diagnosis of primary and relapsing non-small cell lung cancer?** *Lung Cancer* 2005, **50**(2):199–209.
12. Schneider KU, Dietrich D, Fleischhacker M, Leschber G, Merk J, Schäper F, Stapert HR, Vossenaar ER, Weickmann S, Liebenberg V, Kneip C, Seegebarth A, Erdogan F, Rappold G, Schmidt B: **Correlation of SHOX2 gene amplification and DNA methylation in lung cancer tumors.** *BMC Cancer* 2011, **11**:102.
13. Yang AS, Doshi KD, Choi SW, Mason JB, Mannari RK, Gharybian V, Luna R, Rashid A, Shen L, Estecio MR, Kantarjian HM, Garcia-Manero G, Issa JP: **DNA methylation changes after 5-aza-2'-deoxycytidine therapy in patients with leukemia.** *Cancer Res* 2006, **66**(10):5495–5503.
14. Aoyama Y, Avruch J, Zhang XF: **Nore1 inhibits tumor cell growth independent of Ras or the MST1/2 kinases.** *Oncogene* 2004, **23**(19):3426–3433.
15. Avruch J, Praskova M, Ortiz-Vega S, Liu M, Zhang XF: **Nore1 and RASSF1 regulation of cell proliferation and of the MST1/2 kinases.** *Methods Enzymol* 2006, **407**:290–310.

16. Vos MD, Martinez A, Elam C, Dallol A, Taylor BJ, Latif F, Clark GJ: **A role for the RASSF1A tumor suppressor in the regulation of tubulin polymerization and genomic stability.** *Cancer Res* 2004, **64**(12):4244–4250.
17. Pfeifer GP, Dammann R: **Review methylation of the tumor suppressor gene RASSF1A in human tumors.** *Biochemistry (Mosc)* 2005, **70**(5):576–583.
18. Dammann R, Sehaqdarsurenqin U, Liu L, et al: **Frequent RASSF1A promoter hypermethylation and K-ras mutations in pancreatic carcinoma.** *Oncogene* 2003, **22**(24):3806.
19. Dawson MA, Kouzarides T: **Review cancer epigenetics: from mechanism to therapy.** *Cell* 2012, **150**(1):12–27.
20. List AF, Vardiman J, Issa JP, DeWitte TM: **Review myelodysplastic syndromes.** *Hematol Am Soc Hematol Educ Program* 2004:297–317.
21. Griffiths EA, Gore SD: **Review epigenetic therapies in MDS and AML.** *Adv Exp Med Biol* 2013, **754**:253–283.
22. Tsai HC, Li H, Van Neste L, Cai Y, Robert C, Rassool FV, Shin JJ, Harbom KM, Beaty R, Pappou E, Harris J, Yen RW, Ahuja N, Brock MV, Stearns V, Feller-Kopman D, Yarmus LB, Lin YC, Welm AL, Issa JP, Minn I, Matsui W, Jang YY, Sharkis SJ, Baylin SB, Zahnow CA: **Transient low doses of DNA-demethylating agents exert durable antitumor effects on hematological and epithelial tumor cells.** *Cancer Cell* 2012, **21**(3):430–446.

doi:10.1186/1475-2867-13-91

Cite this article as: Mengxi et al.: Effect of DNA methylation inhibitor on RASSF1A genes expression in non-small cell lung cancer cell line A549 and A549DDP. *Cancer Cell International* 2013 **13**:91.

Submit your next manuscript to BioMed Central and take full advantage of:

- Convenient online submission
- Thorough peer review
- No space constraints or color figure charges
- Immediate publication on acceptance
- Inclusion in PubMed, CAS, Scopus and Google Scholar
- Research which is freely available for redistribution

Submit your manuscript at
www.biomedcentral.com/submit

