


PRIMARY RESEARCH

Open Access



# Gamma synuclein is a novel nicotine responsive protein in oral cancer malignancy

Chia-Chen Hsu<sup>1</sup>, Yu-Fu Su<sup>1,2</sup>, Kuo-Yang Tsai<sup>3,4</sup>, Feng-Chih Kuo<sup>5</sup>, Chi-Fu Chiang<sup>6</sup>, Chu-Yen Chien<sup>1</sup>, Ying-Chen Chen<sup>7</sup>, Chien-Hsing Lee<sup>5</sup>, Yu-Chiao Wu<sup>6</sup>, Kun Wang<sup>8\*</sup>, Shyun-Yeu Liu<sup>9\*</sup> and Yi-Shing Shieh<sup>6,10\*</sup> 

## Abstract

**Background:** The mechanisms of neuronal protein  $\gamma$ -synuclein (SNCG) in the malignancy of oral squamous cell carcinoma (OSCC) are not clear. This study tested the hypothesis that SNCG is involved in nicotine-induced malignant behaviors of OSCC. The effect of nicotine on SNCG expression and epithelial-to-mesenchymal transition (EMT) markers were examined.

**Methods:** Short hairpin RNA (shRNA) and an antagonist specific for  $\alpha 7$ -nicotine acetylcholine receptors ( $\alpha 7$ -nAChRs) were used to examine the role of  $\alpha 7$ -nAChRs in mediating the effects of nicotine. Knockdown of SNCG in nicotine-treated cells was performed to investigate the role of SNCG in cancer malignancy. The in vivo effect of nicotine was examined using a nude mouse xenotransplantation model.

**Results:** Nicotine increased SNCG expression in a time- and dose-dependent manner. Nicotine treatment also increased E-cadherin and ZO-1 and decreased fibronectin and vimentin expression. After specific knockdown of  $\alpha 7$ -nAChRs and inhibition of the PI3/AKT signal, the effect of nicotine on SNCG expression was attenuated. Silencing of SNCG abolished nicotine-induced invasion and migration of OSCC cells. The xenotransplantation model revealed that nicotine augmented tumor growth and SNCG expression.

**Conclusion:** Nicotine upregulated SNCG expression by activating the  $\alpha 7$ -nAChRs/PI3/AKT signaling that are participated in nicotine-induced oral cancer malignancy.

**Keywords:** Gamma synuclein, Nicotine acetylcholine receptor, Oral cancer, Signal transduction

## Background

Oral cancer is the sixth most common type of cancer worldwide and the most common cause of head and neck tumors. Each year more than 500,000 patients are

newly diagnosed with oral cancer [1], and more than 90% of these patients have oral squamous cell carcinoma (OSCC) [1, 2]. The overall 5-year survival rate for OSCC is less than 50% [3]. In the past 20 years, although advancements have been made in diagnosis and treatment, the mortality rate for oral cancer has not declined [2]. Investigating molecules that mediate OSCC progression could help enable early diagnosis and effective treatment.

Cigarette smoking is a risk factor for oral squamous cell carcinogenesis and progression [4–6], and nicotine is the major component of tobacco in cigarettes [7, 8]. Previous studies have indicated that nicotine promotes cancer progression in multiple types of cancer [4]. Nicotine exerts pathophysiological effects by binding to nicotine

\*Correspondence: lee53341@gmail.com; syliau@mail.chimei.org.tw; ndmcyss@mail.ndmctsgh.edu.tw

<sup>6</sup> Department of Dentistry, Tri-Service General Hospital, National Defense Medical Center, No.161, Sec.6, Min-Chuan East Rd., Nei-Hu, Taipei 114, Taiwan

<sup>8</sup> Department of Internal Medicine, Cardinal Tien Hospital and School of Medicine, College of Medicine, Fu Jen Catholic University, New Taipei City, Taiwan

<sup>9</sup> Department of Oral and Maxillofacial Surgery, Chi Mei Medical Center, Tainan 710, Taiwan

Full list of author information is available at the end of the article



acetylcholine receptors (nAChRs). It has been reported that there are a high prevalence of nAChRs in the central nervous system (CNS) [9], and nAChRs are also observed in various nonneuronal cells, including cancer cells [4]. In the CNS, binding of nicotine to specific nAChRs leads to distinct electrophysiological and pharmacological properties. For example,  $\alpha 4\beta 2$ -containing nAChRs have the highest nicotine-binding affinity in neurons [10]. After stimulation of  $\alpha 4\beta 2$  nAChRs, dopamine is released in the brain reward pathway, resulting in a smoking addiction. In cancer cells, binding of nicotine to nAChRs stimulates intracellular signaling pathways in a tissue-specific manner, activates downstream mitogenic pathways, and upregulates the expression of growth factors [11].

Synucleins are a family of homologous proteins consisting of three known members:  $\alpha$ -synuclein (SNCA),  $\beta$ -synuclein (SNCB), and  $\gamma$ -synuclein (SNCG) [12]. Synucleins are abundantly expressed in the brain, especially in the presynaptic terminals of neurons [13]. Although the precise function of these proteins remains unknown, SNCA has been implicated in the pathogenesis of Parkinson's disease (PD), Alzheimer's disease and multiple system atrophy. SNCG expression is normally restricted to the brain and peripheral neuronal tissues [14], and its aberrant expression in tissues other than those of the neuronal system is highly associated with human malignancy. Previous studies have reported that nicotine acting on brain nAChRs may affect SNCA aggregation, resulting in neuroprotection [15–17]. Recently, we reported that SNCG is abnormally expressed in OSCC and that its expression is strongly correlated with disease progression [2]. However, at present, the molecular and cellular mechanisms underlying cancer-associated dysregulation of SNCG and whether SNCG is involved in the nicotine-induced malignant behavior of oral cancer remains unknown.

Therefore, the present study investigated the potential involvement of SNCG in mediating nicotine-induced oral cancer malignancy.

## Materials and methods

### Cell culture

Oral squamous cell carcinoma cell lines (OEC-M1 and YD8) were kindly provided by Professor Yook (Namsoul University, Korea) and Professor Meng (National Defense Medical Center, Taiwan). Cells were cultured in an RPMI1640 medium with 10% fetal bovine serum (FBS, Thermo Fisher Scientific, Waltham, MA, USA) before being incubated at 37 °C in a 5% CO<sub>2</sub> atmosphere incubator. All oral cancer cell lines were confirmed to be free of mycoplasma.

### Chemicals

Nicotine was purchased from Sigma-Aldrich (St. Louis, MO, USA), the  $\alpha 7$ -nAChR antagonist methyllycaconitine (MLA) was purchased from Tocris Bioscience (Bristol, England, UK), the P-AKT inhibitor Ly294002 was purchased from Selleck chemicals (Houston, TX, USA). All other chemicals were obtained from Sigma.

### RNA extraction, polymerase chain reaction, and quantitative real-time polymerase chain reaction

mRNA was extracted from the cells with TRIzol reagent (Invitrogen, Carlsbad, CA, USA) in accordance with the protocol provided. Total RNA was reverse transcribed into cDNA using an oligo (dT) 12–18 primer to preserve the relative mRNA profile and produce a template suitable for a polymerase chain reaction (PCR). Quantitative Real-time PCR (QPCR) was performed using the SYBR-Green system in compliance with the protocol provided by Bioline (London, England, UK). Primer sequences were as follows: GAPDH (PCR), forward: GGT GAA GGT CGG AGT CAA CGG A; reverse: GAG GGA TCT CGC TCC TGG AAG A. GAPDH (QPCR), forward: CCA CAT CGC TCA GAC ACC AT; reverse: TGA CCA GGC GCC CAA TA.  $\alpha 7$ -nAChR, forward: GCT GGT CAA GAA CTA CAA TCC C; reverse: CTC ATC CAC GTC CAT GAT CTG. SNCG, forward: CAA GAA GGG CTT CTC CAT CGC CAA GG; reverse: CCT CTT TCT CTT TGG ATG CCA CAC CC.  $\alpha 3$ -nAChR, forward: CCA TGT CTC AGC TGG TG; reverse: GTC CTT GAG GTT CAT GGA.  $\alpha 5$ -nAChR, forward: TCA TGT AGA CAG GTA CTT C; reverse: ATT TGC CCA TTT ATA AAT AA.

### Protein extraction and Western blot analysis

Cell lysate combinations of RIPA with PIC2 and PPI were used to form the lysis buffer, and a reaction time of 30 min in an ice bottle was allocated. The protein concentration in each cell lysate was then measured using a commercial BCA kit (Thermo Fisher Scientific, Waltham, MA, USA). In the Western blot analysis, an SDS-polyacrylamide gel electrophoresis system was used. An anti-GAPDH antibody (Cell Signaling, Danvers, MA, USA), anti-fibronectin antibody (Abcam, Cambridge, England, UK), anti-vimentin antibody (cell signaling), anti-E-cadherin antibody (BD Biosciences, Franklin Lakes, NJ, USA), anti-ZO-1 antibody (BD Biosciences), anti-PCNA antibody (Cell Signaling), anti-protein kinase B (AKT) antibody (Cell Signaling), anti-phospho-AKT (P-AKT) antibody (Cell Signaling), anti- $\alpha 7$ -nAChR antibody (Abcam), and anti-SNCG antibody (Cell Signaling) were used for probing.

### Wound-healing assay

Cells were seeded in a 6-well plate, and a 1000  $\mu$ L pipette tip was used to form a wound after the cells had attached. The wound was washed three times with phosphate buffer to remove debris and then treated with 1  $\mu$ M nicotine, 10  $\mu$ M MLA, or 40  $\mu$ M MLA for 8 h. The wound area was determined by capturing images through a microscope, and the variation in the wound area was measured using Image J software. Wound-healing ability of the cells was calculated using the following formula: (wound area at 0 h – wound area at 8 h)/wound area at 0 h.

### Transwell invasion assay

Cells were seeded in a 24-well insert-based culture (BD Biosciences) and were pre-coated with Matrigel Basement Membrane Matrix (BD Biosciences) 30 min prior to insertion in the well. After 24 h, the insert was removed and the membrane was cut. The number of invasive cells was counted using Image J software.

### Short hairpin RNA

A short hairpin RNA (shRNA)  $\alpha$ 7-nAChR and SNCG was purchased from the RNAi Core Facility of Academia Sinica (Taipei, Taiwan). The sh- $\alpha$ 7-nAChR sequence was CCG GGC AAA TGT CTT GGA CAG ATC ACT CGA GTG ATC TGT CCA AGA CAT TTG CTT TTT TG, the sh-SNCG sequence was CCG GGA CCA AGG AGA ATG TTG TAC ACT CGA GTG TAC AAC ATT CTC CTT GGT CTT TTT TG and the negative control was Plko-1. Transfection was completed using Polyjet™ In Vitro DNA Transfection Reagent (SigmaGen Laboratories, Medical Center Dr, Rockville, MD, USA) in accordance with the protocol provided.

### In vivo analysis of mouse xenografts

BALB/cAnN.Cg-Foxn1nu/Cr1Nar1 nude mice, male, aged 4–5 weeks and with an average body weight of 20 g, were purchased from the National Laboratory Animal Center, Taipei, Taiwan. All experiments on mice were performed according to the guidelines of our institute (Guide for Care and Use of Laboratory Animals, National Defense Medical Center) and were approved by the Institutional Animal Care and Use Committee of National Defense Medical Center, Taiwan (Approval No.: IACUC-15-365). Animal care and practice was based in the laboratory animal center of the National Defense Medical

Center (Taipei, Taiwan). The  $1 \times 10^6$  OEC-M1 cells mixed with Matrigel (BD Biosciences)/phosphate-buffered saline (PBS) were injected subcutaneously into the flanks of the mice. The mice in each group were treated with 1.5 mg/kg/day [18], and PBS was used as the control. Tumor volume was calculated using the following formula: (length  $\times$  width<sup>2</sup>)/2 [6].

### Immunohistochemistry

Tumor xenografts were extracted from formalin-fixed, paraffin-embedded tissue samples and were deparaffinized, and protein expression in each tissue was observed using the commercial Novolink™ polymer detection system (Leica Biosystems, Wetzlar, Hessen, Germany).

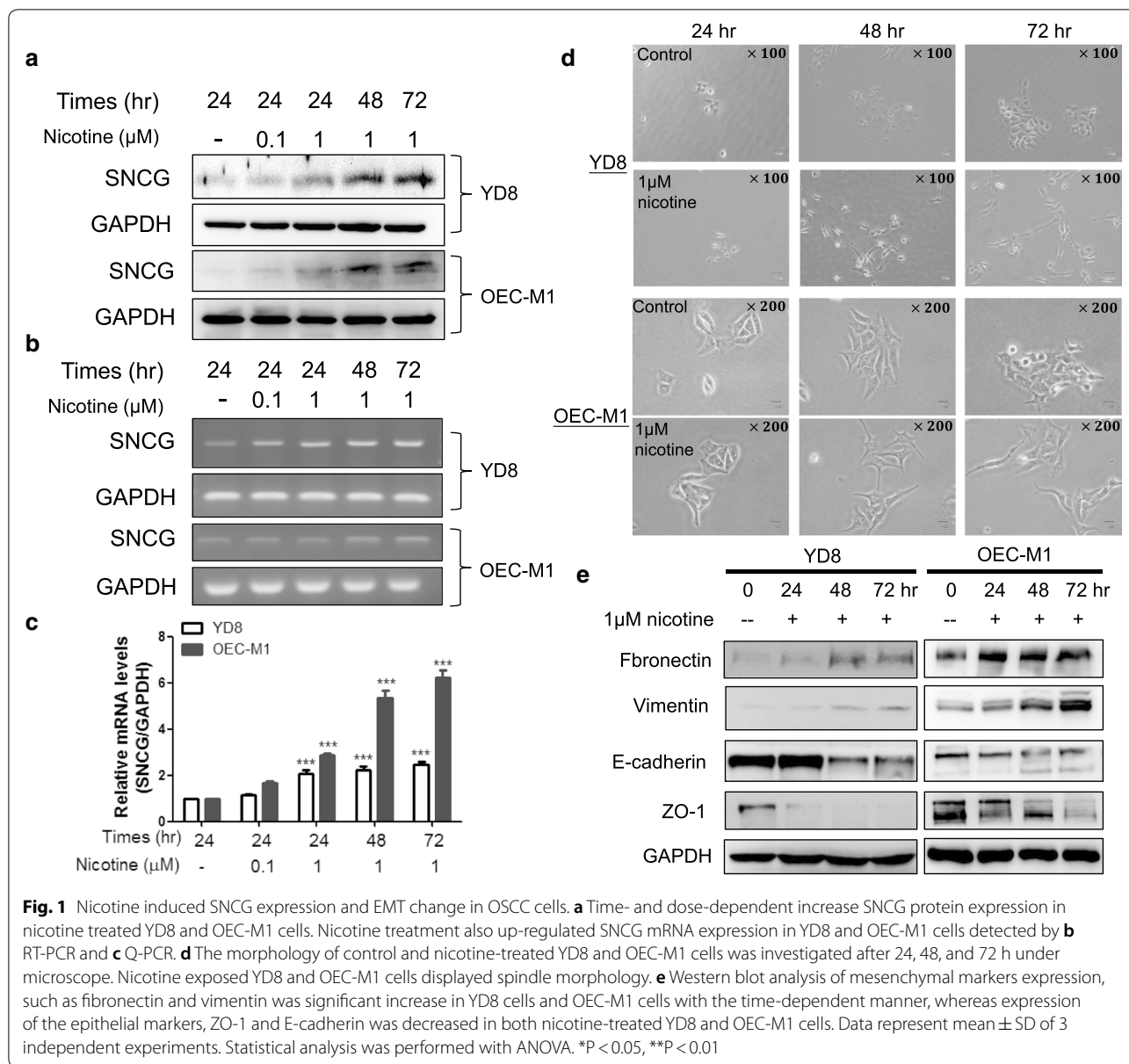
### Statistical analysis

GraphPad Prism (version 5) is used to perform statistical analyses and a P value < 0.05 is considered statistically significant. Data are expressed as the mean  $\pm$  SD. The differences between groups are analyzed using a two-tailed student's t-test when only two groups are present. Multiple groups will be analyzed with ANOVA.

## Results

### Nicotine up-regulates SNCG expression in OSCC cells

To determine whether SNCG is a nicotine-responsive protein, YD8 and OEC-M1 OSCC cells were treated with different doses of nicotine for 72 h followed by Western blot analysis of SNCG levels. Treatment with nicotine stimulated SNCG expression in a dose-dependent manner (Fig. 1a). OSCC cells were also treated with nicotine for different time periods and it was observed that nicotine time-dependently upregulated SNCG expression (Fig. 1a). In addition, we investigated whether nicotine induces SNCG transcription. RT-PCR and quantitative RT-PCR demonstrated that nicotine significantly induced SNCG transcription (Fig. 1b, c). We also observed that nicotine treatment altered the morphology of oral cancer cells from an oval shape to a slender spindle shape (Fig. 1d), which is characteristic of epithelial–mesenchymal transition (EMT). Therefore, we further examined EMT markers. The results showed a time-dependent increase in epithelial markers such as E-cadherin and zonula occludens-1 (ZO-1) and a time-dependent decrease in mesenchymal markers such as fibronectin and vimentin in nicotine-treated OSCC cells (Fig. 1e).



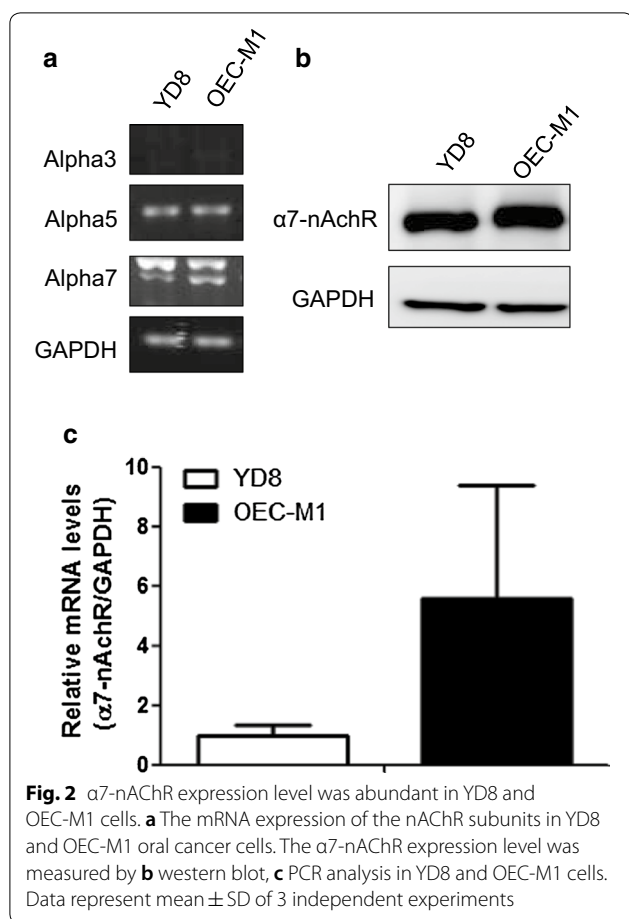
**$\alpha 7$ -nAChRs knockdown/inhibition suppresses SNCG expression**

In oral cancer,  $\alpha 3$ -,  $\alpha 5$ -, and  $\alpha 7$ -nAChRs have been identified as major receptors that mediate the effect of nicotine on tumor development [11, 19]. Therefore, we screened for these receptors in our tested cells and found that  $\alpha 3$ -nAChRs were not expressed in either cell line; moreover, both cell lines expressed similar levels of  $\alpha 5$ -nAChR not specific to any cell (Fig. 2a).  $\alpha 7$ -nAChR expression was abundant in YD8 and OEC-M1 cells (Fig. 2b, c). Therefore, we investigated the potential role of  $\alpha 7$ -nAChRs in mediating nicotine-induced upregulation of SNCG expression. We used short hairpin RNA

(shRNA) to knockdown the expression of  $\alpha 7$ -nAChRs in OEC-M1 cells (Fig. 3a). Compared with control cells, the effect of nicotine on SNCG expression was attenuated in  $\alpha 7$ -nAChR-silenced cells (Fig. 3b). Similar results were observed in OEC-M1 cells treated with the  $\alpha 7$ -nAChR antagonist MLA (Fig. 3c).

**The AKT pathway is involved in nicotine-induced SNCG expression by  $\alpha 7$ -nAChRs**

In tumor progression the downstream signaling pathways of  $\alpha 7$ -nAChRs involve extracellular signal-regulated kinase (ERK) and AKT pathways [8, 20–22]. Therefore, in the current study, we examined whether exposure to



nicotine causes activation of the AKT and/or ERK signaling pathways in OSCC cells. Notably, phospho-ERK levels did not change in nicotine-treated OSCC cells (data not shown). However, nicotine treatment increased phospho-AKT levels, and the effect of nicotine on SNCG expression was suppressed by treatment with ly294002 (Fig. 4a). Additionally, when  $\alpha 7$ -nAChRs were silenced, the effect of nicotine on AKT activation was suppressed (Fig. 4b). SNCG expression that was upregulated by nicotine treatment was attenuated when  $\alpha 7$ -nAChR was silenced (Fig. 4b). These results further confirm that nicotine increases SNCG expression by activating phospho-AKT through  $\alpha 7$ -nAChRs.

### Nicotine-induced tumor malignant behaviors were attenuated in SNCG knockdown cells

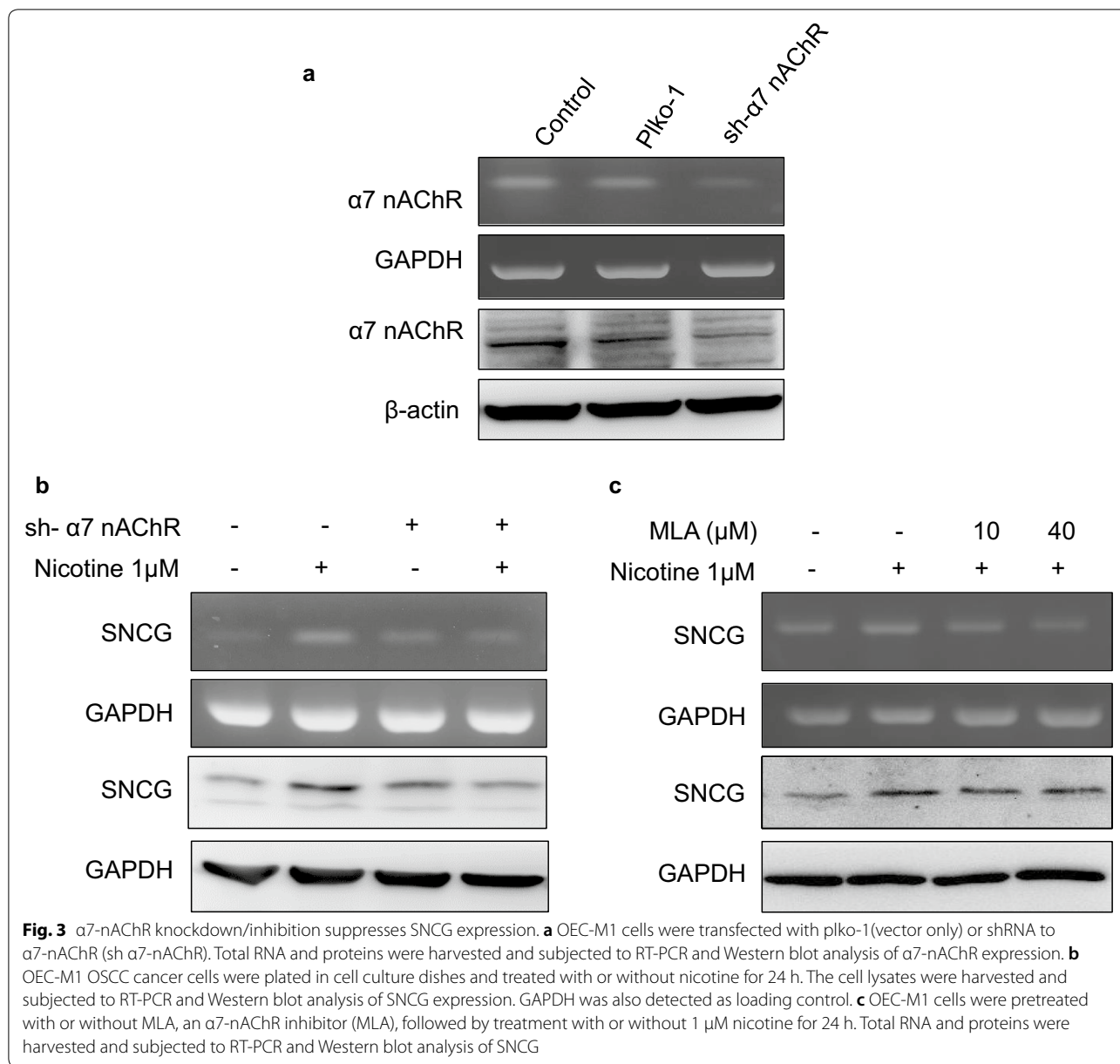
To determine whether SNCG is involved in nicotine-induced cell migration and invasion, OSCC cells were treated with or without nicotine and transfected with SNCG shRNA (Fig. 5a), and then wound healing assays were performed. 8 h after treatment with 1  $\mu$ M nicotine the wound area was much larger in vehicle-treated (control) cells compared with nicotine-treated cells. Cell migration was significantly increased by more than twofold in OEC-M1 cells, indicating that nicotine promoted OSCC cell migration (Fig. 5b, c). Knockdown of SNCG inhibited cell migration and abrogated the promotion of cell migration by nicotine (Fig. 5b, c). In addition, nicotine treatment increased the invasion ability of OEC-M1 cells threefold (Fig. 5d, e). Knockdown of SNCG abrogated the promotion of cell invasion by nicotine (Fig. 5d, e). This data demonstrates that SNCG is a mediator of nicotine-induced cell migration and invasion.

### Nicotine induces tumor growth and upregulation of SNCG in vivo

Next, we used a xenograft model to determine whether nicotine induces SNCG expression and cancer malignancy. OSCC cells were subcutaneously injected into the flanks of nude mice treated with 1.5 mg/kg/day nicotine or PBS (control). After 4 weeks of tumor growth these mice were sacrificed. As displayed in Fig. 6a, nicotine significantly induced the growth of xenograft tumors in compared with the PBS group. Quantitative results of tumor volume are shown in Fig. 6b. Immunohistochemical analysis revealed increases in the immunoactivity of SNCG, fibronectin, vimentin and PCNA, and decreases in the immunoactivity of E-cadherin and ZO-1 in nicotine-treated nude mice (Fig. 6c). These findings indicate that nicotine-induced SNCG expression is strongly correlated with accelerated tumor proliferation and malignant effects in vivo.

### Discussion

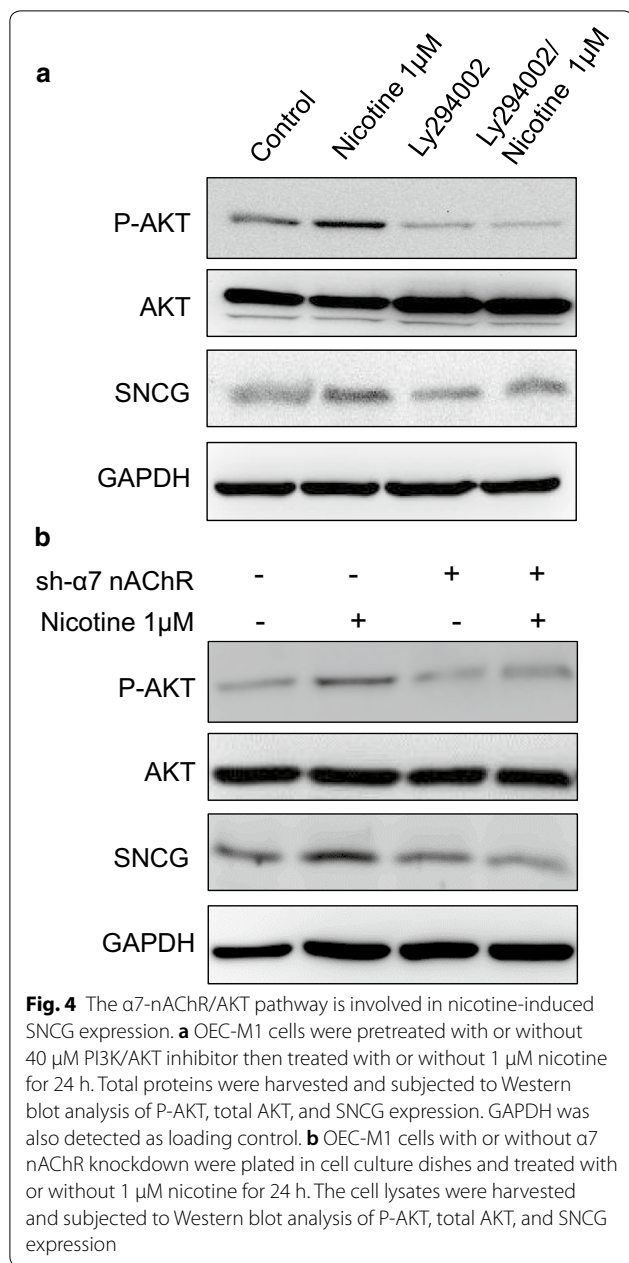
In the present study, we reported that SNCG is a nicotine-responsive protein, and that nicotine binds to  $\alpha 7$ -nAChRs to activate PI3/AKT signaling, thereby upregulating SNCG expression. To the best of our knowledge, this study is the first to demonstrate that SNCG plays a crucial role in mediating nicotine-induced oral cancer malignancy. Our results demonstrate that SNCG is involved in nicotine-induced oral cancer malignancy. Nicotine induced time- and dose-dependent



upregulation of SNCG expression in OSCC cells, and this effect was suppressed when α7-nAChR was knocked down or inhibited. Additionally, an in vivo xenograft model further showed that nicotine treatment augmented α7-nAChR and SNCG expression and tumor growth. Therefore, this study provides the biological mechanism underlying the association between nicotine and SNCG in oral cancer malignancy.

SNCG belongs to a family of small proteins called synucleins [12]. Synucleins are highly expressed in neuronal cells and have been specifically implicated in

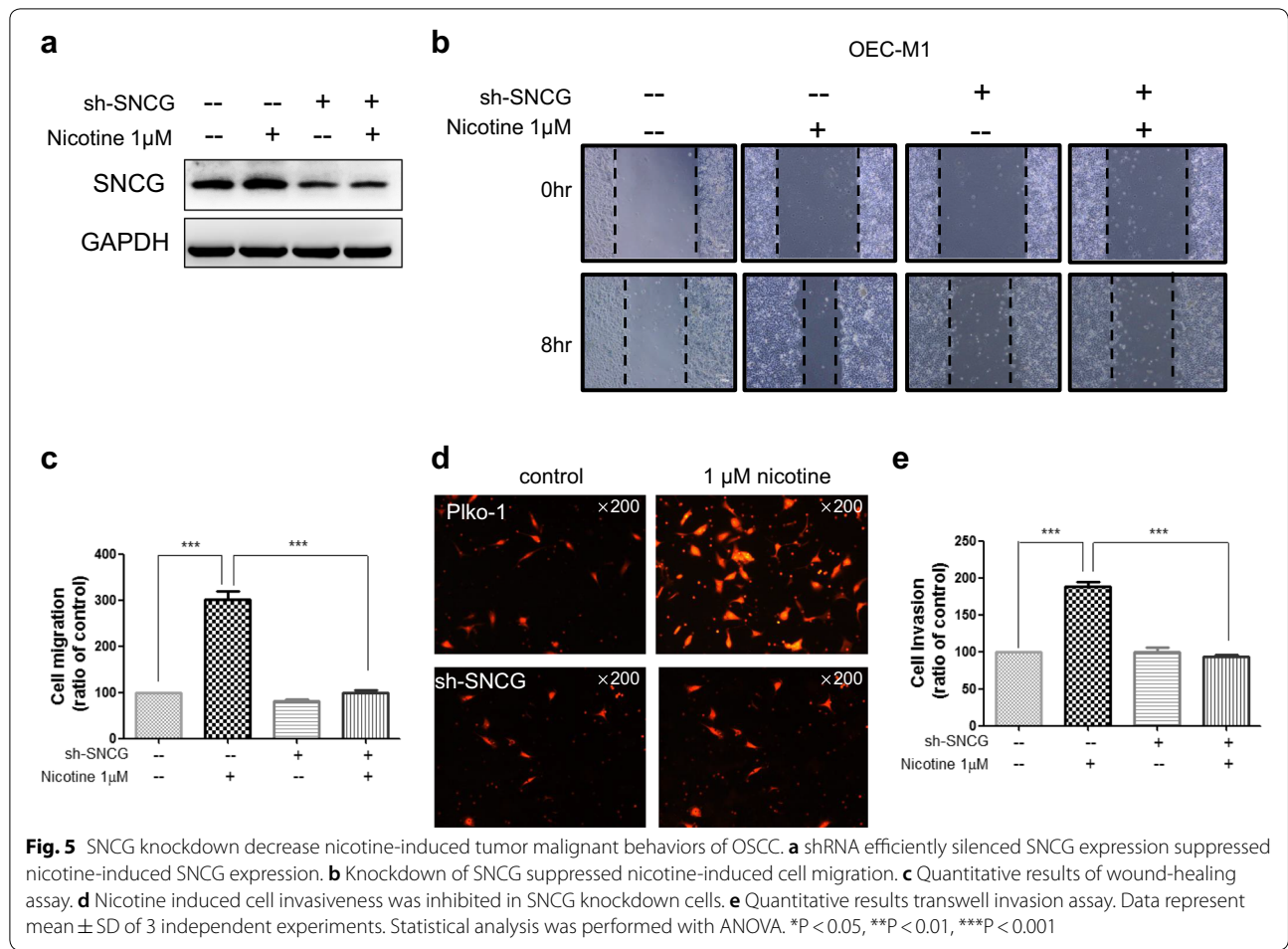
neurodegenerative diseases [23]. However, SNCG is clearly not involved in neurodegenerative diseases but is primarily involved in neoplastic diseases [12]. So far, the abnormal overexpression of the SNCG protein has been demonstrated in many different malignant diseases [2, 24–28]. For example, our previous study [2] showed a significant increase in SNCG expression in the OSCC cell lines and oral cancer tissues compared with the almost-undetectable expression levels in the nonneoplastic adjacent tissue. In agreement with previous reports on other tumors, it was found that SNCG expression



increases from baseline levels in normal tissues to high levels in dysplasia and tumor tissues [26, 28, 29]. The present study further demonstrated that SNCG is a potential mediator of nicotine-induced malignant behaviors, such as invasion and migration. We analyzed retrieval in the GEO database, for adenocarcinoma of the lung tissue with or without cigarette smoking (GSE10072\_209877); SNCG expression was higher in smoker's tumor

tissues compared with the tumors of those who had never smoked. Nicotine and its metabolites can promote tumor growth through increased proliferation, angiogenesis, migration, invasion and EMT. Many of those cancers are attributable to cigarette smoking and nicotine exposure. Notably, a recent study also reported that cigarette smoke extract (CSE) has strong inducing effects on SNCG gene expression in A549 lung cancer cells, and that CSE treatment augments the invasive capacity of A549 cells in an SNCG-dependent manner [30]. Our study reported that SNCG is involved in nicotine-induced oral cancer malignancy. Based on the aforementioned findings and our results, it can be hypothesized that SNCG also participates in other nicotine-related malignancies in patients who smoke. Therefore, additional studies should be conducted to investigate this hypothesis.

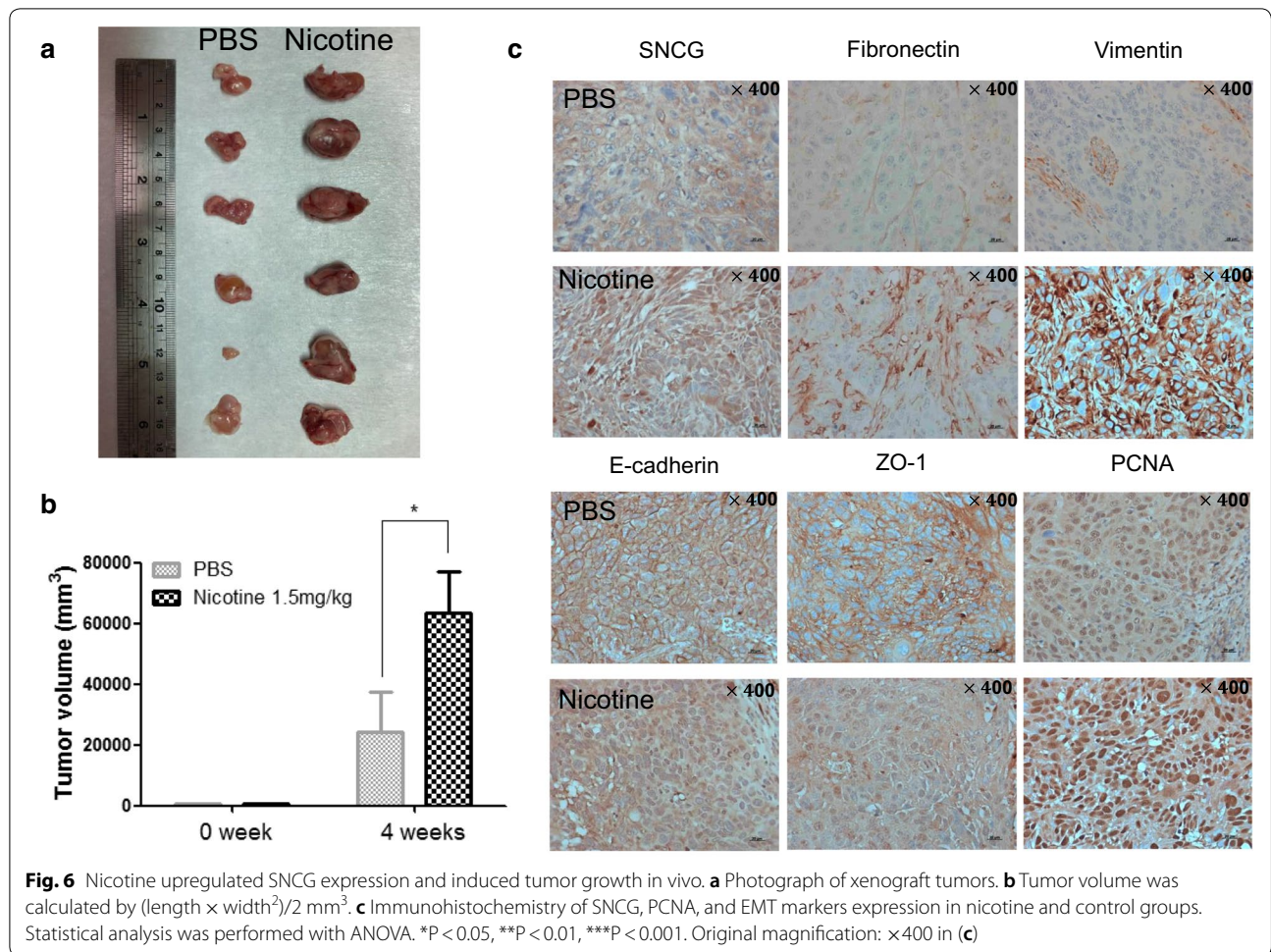
The present study demonstrated that SNCG participated in nicotine-induced OSCC malignancies and that knockdown of SNCG abolished nicotine-induced OEC-M1 invasion and migration. Our results demonstrate the oncogenic potential of SNCG in OSCC cells and support the notion that SNCG promotes cancer progression [2]. Although the precise mechanisms through which SNCG is involved in nicotine-induced oral cancer invasion and migration remain unclear, a recent report by Lee et al. revealed the biological function of SNCG in cancer. Lee et al. [31] reported that nicotine treatment upregulated matrix metalloproteinase (MMP) expression in cells and led to the degradation of the extracellular matrix (ECM). The ECM plays an important role in the malignant behaviors of cancer cells, including invasion and migration [32]. This role is achieved by the action of soluble, secreted proteases such as MMPs. SNCG has been shown to strongly induce MMP-9 and tissue inhibition of MMP-1 and MMP-2 (TIMP1 and TIMP2, respectively) expression and to moderately increase MMP-2 activity and protein levels [33]. Thus, nicotine-induced oral cancer malignancy may be caused by the upregulation of SNCG expression, and may lead to ECM degradation, which contributes to malignant behaviors, such as invasion and migration. In addition, an increasing number of studies have reported that endoplasmic reticulum (ER) stress and unfolded protein response (UPR) are activated in tumor cells and play critical roles in solid tumor growth and progression [34, 35]. The ER quality control machinery ensures the quality of proteins synthesized in the ER, so that only proteins which are properly folded and packaged into vesicles are destined for secretion, while those that are misfolded and do not



pass the quality control checkpoints are delivered to the proteasome for degradation. Increase in the physiological demand for protein folding or stimuli that disrupt the ability of proteins to fold, cause the accumulation of un-/misfolded proteins in the ER lumen, resulting in ER

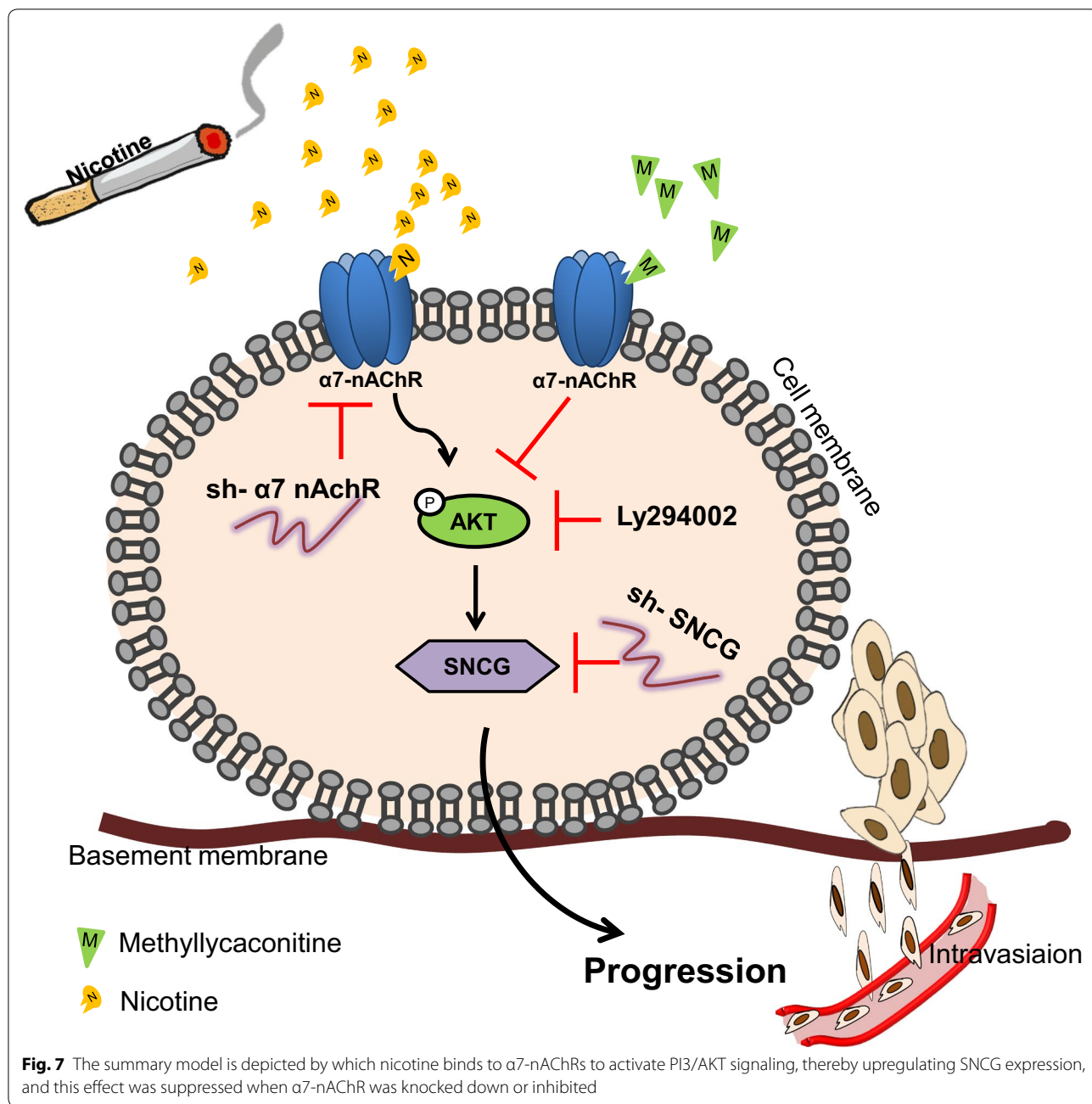
stress [34, 35]. Recent reports have indicated that nicotine and SNCG are involved in ER stress induction and UPR [36, 37]. For example, a previous study [31] showed that nicotine treatment increased the levels of glucose-regulated protein-78 (GRP78; an ER stress indicator) and





MMP (MMP-1, MMP-2, MMP-8, and MMP-9) expression. Hua et al. [38] reported that ER stress upregulated SNCG expression; this upregulation was mediated by activation transcription factor 4, an ER stress effector.

Moreover, recent studies have demonstrated that SNCG acts as a chaperone protein and associates with BubR1 to over-ride mitotic arrest [39], and that SNCG enhances the ligand-binding affinity of estrogen receptors to



activate mitotic signaling [40]. Because SNCG possesses chaperone-like activity [12], it may interact with different proteins in different cellular backgrounds. Identifying specific cellular targets of SNCG to determine the molecular mechanisms through which SNCG induces malignant behavior such as invasion and migration will provide insights into its oncogenic functions in OSCC.

### Conclusions

Our findings revealed that nicotine and  $\alpha 7$ -nAChRs/PI3/AKT signaling positively regulated SNCG expression, which is an important signaling pathway that leads to the overexpression of the SNCG gene (Fig. 7). Our results indicated that SNCG participated in nicotine-induced malignant behaviors in OSCC cells, which were reversed by knockdown of SNCG. Therefore,

blocking SNCG may be a beneficial strategy for treating patients with oral cancer who smoke.

### Abbreviations

Akt: Protein kinase B; DMSO: Dimethyl sulfoxide; EMT: Epithelial-to-mesenchymal transition; GAPDH: Glyceraldehyde 3-phosphate dehydrogenase; MLA: Methyllycaconitine; MTT: (3-(4,5-dimethylthiazol-2-yl)-2, 5-diphenyltetrazolium bromide); nAChRs: Nicotinic acetylcholine receptors; OSCC: Oral squamous cell carcinoma; PBS: Phosphate-buffered saline; PCNA: Proliferating cell nuclear antigen; PCR: Polymerase chain reaction; PI3K: Phosphatidylinositol 3-kinase; QPCR: Quantitative Real-time PCR; sh-RNA: Short hairpin RNA; SNCG:  $\gamma$ -synuclein; Zo-1: Zonula occludens-1.

### Acknowledgements

Not applicable.

### Authors' contributions

Study concepts: YSS; Study design: CCH, YSS; Data acquisition: CCH, CYC, CFC; Quality control of data and algorithms: CCH, YCC; Data analysis and interpretation: CCH, YSS, YFS, CFC, CHL; Statistical analysis: CCH, FCK; Manuscript preparation: CCH, YSS, KYT; Manuscript editing: CCH, YSS, SYL, KW; Manuscript review: YSS, YFS, KYT, FCK, YCW, SYL, KW. All authors read and approved the final manuscript.

### Funding

This work was supported by research Grants from the Ministry of science and technology (MOST 106-2314-B-016-005-MY3), the National Defense Medical Center (MAB-107-081), the Tri-Service General Hospital (TSGH-C107-006-006-S03, TSGH-C108-005-006-006-S03), Cardinal Tien Hospital (CTH105A-219, CTH106A-2B03 and CTH106A-2C03), and the Chi Mei Medical Center (CMN-DMC10702), Taiwan.

### Availability of data and materials

All data generated or analysed during this study are included in this published article.

### Ethics approval and consent to participate

All experiments on mice were performed according to the guidelines of our institute (Guide for Care and Use of Laboratory Animals, National Defense Medical Center) and were approved by the Institutional Animal Care and Use Committee of National Defense Medical Center, Taiwan (Approval No.: IACUC-15-365). Animal care and practice was based in the laboratory animal center of the National Defense Medical Center.

### Consent for publication

Not applicable.

### Competing interests

The authors declare that they have no competing interests.

### Author details

<sup>1</sup> Graduate Institute of Medical Sciences, National Defense Medical Center, Taipei 114, Taiwan. <sup>2</sup> Department of Radiation Oncology, Tri-Service General Hospital, National Defense Medical Center, Taipei 114, Taiwan. <sup>3</sup> Department of Oral and Maxillofacial Surgery, Changhua Christian Hospital, Changhua 500, Taiwan. <sup>4</sup> College of Nursing and Health Science, Da-Yeh University, Changhua 515, Taiwan. <sup>5</sup> Division of Endocrinology and Metabolism, Department of Internal Medicine, Tri-Service General Hospital, National Defense Medical Center, Taipei 114, Taiwan. <sup>6</sup> Department of Dentistry, Tri-Service General Hospital, National Defense Medical Center, No.161, Sec.6, Min-Chuan East Rd., Nei-Hu, Taipei 114, Taiwan. <sup>7</sup> Molecular and Cell Biology, Taiwan International Graduate Program, Academia Sinica and Graduate Institute of Life Science, National Defense Medical Center, Taipei 114, Taiwan. <sup>8</sup> Department of Internal Medicine, Cardinal Tien Hospital and School of Medicine, College of Medicine, Fu Jen Catholic University, New Taipei City, Taiwan. <sup>9</sup> Department of Oral and Maxillofacial Surgery, Chi Mei Medical Center, Tainan 710, Taiwan. <sup>10</sup> Department and Graduate Institute of Biochemistry, National Defense Medical Center, Taipei 114, Taiwan.

Received: 11 December 2019 Accepted: 6 July 2020

Published online: 10 July 2020

### References

- Wang C, Niu W, Chen H, Shi N, He D, Zhang M, et al. Nicotine suppresses apoptosis by regulating alpha7nAChR/Prx1 axis in oral precancerous lesions. *Oncotarget*. 2017;8(43):75065–75.
- Cheng JC, Chiang MT, Lee CH, Liu SY, Chiu KC, Chou YT, et al. Gamma-synuclein expression is a malignant index in oral squamous cell carcinoma. *J Dent Res*. 2016;95(4):439–45.
- Lo WL, Kao SY, Chi LY, Wong YK, Chang RC. Outcomes of oral squamous cell carcinoma in Taiwan after surgical therapy: factors affecting survival. *J Oral Maxillofac Surg*. 2003;61(7):751–8.
- Wu CH, Lee CH, Ho YS. Nicotinic acetylcholine receptor-based blockade: applications of molecular targets for cancer therapy. *Clin Cancer Res*. 2011;17(11):3533–41.
- Yu MA, Kiang A, Wang-Rodriguez J, Rahimy E, Haas M, Yu V, et al. Nicotine promotes acquisition of stem cell and epithelial-to-mesenchymal properties in head and neck squamous cell carcinoma. *PLoS ONE*. 2012;7(12):e51967.
- Yu CC, Chang YC. Enhancement of cancer stem-like and epithelial-mesenchymal transdifferentiation property in oral epithelial cells with long-term nicotine exposure: reversal by targeting SNAI1. *Toxicol Appl Pharmacol*. 2013;266(3):459–69.
- Wang YY, Liu Y, Ni XY, Bai ZH, Chen QY, Zhang Y, et al. Nicotine promotes cell proliferation and induces resistance to cisplatin by alpha7 nicotinic acetylcholine receptor mediated activation in Raw264.7 and E14 cells. *Oncol Rep*. 2014;31(3):1480–8.
- Mucchiato V, Fasoli F, Pucci S, Moretti M, Benfante R, Maroli A, et al. alpha9- and alpha7-containing receptors mediate the pro-proliferative effects of nicotine in the A549 adenocarcinoma cell line. *Br J Pharmacol*. 2018;175(11):1957–72.
- Lee CH, Wu CH, Ho YS. From smoking to cancers: novel targets to neuronal nicotinic acetylcholine receptors. *J Oncol*. 2011;2011:693424.
- Xiu X, Puskar NL, Shanata JA, Lester HA, Dougherty DA. Nicotine binding to brain receptors requires a strong cation-pi interaction. *Nature*. 2009;458(7237):534–7.
- Zhao Y. The oncogenic functions of nicotinic acetylcholine receptors. *J Oncol*. 2016;2016:9650481.
- Ahmad M, Attoub S, Singh MN, Martin FL, El-Agnaf OM. Gamma-synuclein and the progression of cancer. *FASEB J*. 2007;21(13):3419–30.
- Duda JE, Shah U, Arnold SE, Lee VM, Trojanowski JQ. The expression of alpha-, beta-, and gamma-synucleins in olfactory mucosa from patients with and without neurodegenerative diseases. *Exp Neurol*. 1999;160(2):515–22.
- Lavedan C, Leroy E, Dehejia A, Buchholtz S, Dutra A, Nussbaum RL, et al. Identification, localization and characterization of the human gamma-synuclein gene. *Hum Genet*. 1998;103(1):106–12.
- Hong DP, Fink AL, Uversky VN. Smoking and Parkinson's disease: does nicotine affect alpha-synuclein fibrillation? *Biochim Biophys Acta*. 2009;1794(2):282–90.
- Kardani J, Sethi R, Roy I. Nicotine slows down oligomerisation of alpha-synuclein and ameliorates cytotoxicity in a yeast model of Parkinson's disease. *Biochim Biophys Acta Mol Basis Dis*. 2017;1863(6):1454–63.
- Subramaniam SR, Magen I, Bove N, Zhu C, Lemesre V, Dutta G, et al. Chronic nicotine improves cognitive and social impairment in mice over-expressing wild type alpha-synuclein. *Neurobiol Dis*. 2018;117:170–80.
- Wu Y, Song P, Zhang W, Liu J, Dai X, Liu Z, et al. Activation of AMPKalpha2 in adipocytes is essential for nicotine-induced insulin resistance in vivo. *Nat Med*. 2015;21(4):373–82.
- Arredondo J, Chernyavsky AI, Grando SA. Nicotinic receptors mediate tumorigenic action of tobacco-derived nitrosamines on immortalized oral epithelial cells. *Cancer Biol Ther*. 2006;5(5):511–7.
- Yuge K, Kikuchi E, Hagiwara M, Yasumizu Y, Tanaka N, Kosaka T, et al. Nicotine induces tumor growth and chemoresistance through activation of the PI3K/Akt/mTOR pathway in bladder cancer. *Mol Cancer Ther*. 2015;14(9):2112–20.

21. Jia Y, Sun H, Wu H, Zhang H, Zhang X, Xiao D, et al. Nicotine inhibits cisplatin-induced apoptosis via regulating alpha5-nAChR/AKT signaling in human gastric cancer cells. *PLoS ONE*. 2016;11(2):e0149120.
22. Throm VM, Mannle D, Giese T, Bauer AS, Gaida MM, Kopitz J, et al. Endogenous CHRNA7-ligand SLURP1 as a potential tumor suppressor and antinicotinic factor in pancreatic cancer. *Oncotarget*. 2018;9(14):11734–51.
23. Surguchov A. Synucleins: are they two-edged swords? *J Neurosci Res*. 2013;91(2):161–6.
24. Bruening W, Giasson BI, Klein-Szanto AJ, Lee VM, Trojanowski JQ, Godwin AK. Synucleins are expressed in the majority of breast and ovarian carcinomas and in preneoplastic lesions of the ovary. *Cancer*. 2000;88(9):2154–63.
25. Gupta A, Godwin AK, Vanderveer L, Lu A, Liu J. Hypomethylation of the synuclein gamma gene CpG island promotes its aberrant expression in breast carcinoma and ovarian carcinoma. *Cancer Res*. 2003;63(3):664–73.
26. Li Z, Sclabas GM, Peng B, Hess KR, Abbruzzese JL, Evans DB, et al. Overexpression of synuclein-gamma in pancreatic adenocarcinoma. *Cancer*. 2004;101(1):58–65.
27. Liu H, Liu W, Wu Y, Zhou Y, Xue R, Luo C, et al. Loss of epigenetic control of synuclein-gamma gene as a molecular indicator of metastasis in a wide range of human cancers. *Cancer Res*. 2005;65(17):7635–43.
28. Zhao J, Xing N. Identification of gamma-synuclein as a stage-specific marker in bladder cancer by immunohistochemistry. *Med Sci Monit*. 2014;20:2550–5.
29. Ye Q, Zheng MH, Cai Q, Feng B, Chen XH, Yu BQ, et al. Aberrant expression and demethylation of gamma-synuclein in colorectal cancer, correlated with progression of the disease. *Cancer Sci*. 2008;99(10):1924–32.
30. Liu H, Zhou Y, Boggs SE, Belinsky SA, Liu J. Cigarette smoke induces demethylation of prometastatic oncogene synuclein-gamma in lung cancer cells by downregulation of DNMT3B. *Oncogene*. 2007;26(40):5900–10.
31. Lee SI, Kang KL, Shin SI, Herr Y, Lee YM, Kim EC. Endoplasmic reticulum stress modulates nicotine-induced extracellular matrix degradation in human periodontal ligament cells. *J Periodontol Res*. 2012;47(3):299–308.
32. Giussani M, Triulzi T, Sozzi G, Tagliabue E. Tumor extracellular matrix remodeling: new perspectives as a circulating tool in the diagnosis and prognosis of solid tumors. *Cells*. 2019. <https://doi.org/10.3390/cells8020081>.
33. Conlon GA, Murray GI. Recent advances in understanding the roles of matrix metalloproteinases in tumour invasion and metastasis. *J Pathol*. 2019;247(5):629–40.
34. Corazzari M, Gagliardi M, Fimia GM, Piacentini M. Endoplasmic reticulum stress, unfolded protein response, and cancer cell fate. *Front Oncol*. 2017;7:78.
35. Hiss DC, Gabriels GA. Implications of endoplasmic reticulum stress, the unfolded protein response and apoptosis for molecular cancer therapy. Part II: targeting cell cycle events, caspases, NF-kappaB and the proteasome. *Expert Opin Drug Discov*. 2009;4(9):907–21.
36. Jorgensen E, Stinson A, Shan L, Yang J, Gietl D, Albino AP. Cigarette smoke induces endoplasmic reticulum stress and the unfolded protein response in normal and malignant human lung cells. *BMC Cancer*. 2008;8:229.
37. Wong MK, Nicholson CJ, Holloway AC, Hardy DB. Maternal nicotine exposure leads to impaired disulfide bond formation and augmented endoplasmic reticulum stress in the rat placenta. *PLoS ONE*. 2015;10(3):e0122295.
38. Hua H, Xu L, Wang J, Jing J, Luo T, Jiang Y. Up-regulation of gamma-synuclein contributes to cancer cell survival under endoplasmic reticulum stress. *J Pathol*. 2009;217(4):507–15.
39. Gupta A, Inaba S, Wong OK, Fang G, Liu J. Breast cancer-specific gene 1 interacts with the mitotic checkpoint kinase BubR1. *Oncogene*. 2003;22(48):7593–9.
40. Jiang Y, Liu YE, Goldberg ID, Shi YE. Gamma synuclein, a novel heat-shock protein-associated chaperone, stimulates ligand-dependent estrogen receptor alpha signaling and mammary tumorigenesis. *Cancer Res*. 2004;64(13):4539–46.

## Publisher's Note

Springer Nature remains neutral with regard to jurisdictional claims in published maps and institutional affiliations.

Ready to submit your research? Choose BMC and benefit from:

- fast, convenient online submission
- thorough peer review by experienced researchers in your field
- rapid publication on acceptance
- support for research data, including large and complex data types
- gold Open Access which fosters wider collaboration and increased citations
- maximum visibility for your research: over 100M website views per year

At BMC, research is always in progress.

Learn more [biomedcentral.com/submissions](https://biomedcentral.com/submissions)

